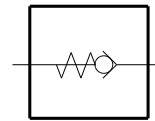
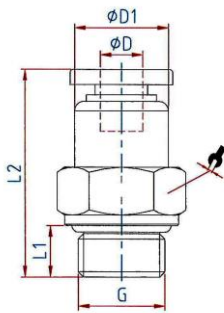


The non-return function of these push-in fittings prevents the air from flowing back; the unidirectional design means air flow is only possible in one direction. These valves are available with air flow from the port to the tube or from the tube to the port.

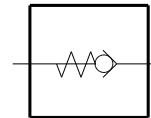
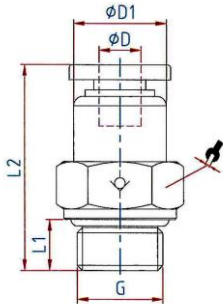
Material:	Plastic and nickel-plated brass
Sleeve:	Plastic
Working pressure:	0 - 10 bar
Opening pressure:	0.2 bar
Temperature range:	0 °C to 60 °C
Sealing surface:	O-ring (NBR)
Port:	M thread acc. to DIN 13-1, with O-ring G thread acc. to DIN EN ISO 228-1, with O-ring R thread acc. to ISO 7-1, coated
Medium:	Compressed air*
Sealant:	NBR
Applications:	Compressed air systems
Recommended hose:	PU or PA (nylon)



200.148

Straight non-return valve, flow direction from port to tube, parallel male thread with O-ring (NBR)

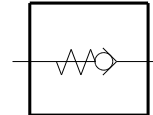
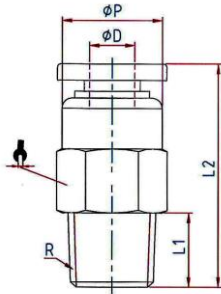
Art. No.	Type No.	Ø D mm	G mm	Ø D1 mm	L1 mm	L2 mm	a/f mm	Standard thread
110216	200.54	4	M5	10.0	3.5	31.0	10	DIN 13-1
110216 = discontinued product. No longer available. New product 151587 (200.54-1)								
110217	200.184	4	G 1/8	10.0	5.5	24.2	14	DIN EN ISO 228-1
110218	200.186	6	G 1/8	12.0	5.5	26.0	14	DIN EN ISO 228-1
110218 = discontinued product. No longer available. New product 151351 (200.186-1)								
110219	200.188	8	G 1/8	14.0	5.5	32.8	14	DIN EN ISO 228-1
110219 = discontinued product. No longer available. New product 151493 (200.188-2)								
110220	200.146	6	G 1/4	12.0	7.5	33.0	17	DIN EN ISO 228-1
110220 = discontinued product. No longer available. New product 151494 (200.146-2)								
110221	200.148	8	G 1/4	14.0	7.5	34.8	17	DIN EN ISO 228-1
110221 = discontinued product. No longer available. New product 151352 (200.148-1)								
110222	200.3810	10	G 3/8	17.0	7.5	41.0	20	DIN EN ISO 228-1
110223	200.3812	12	G 3/8	20.0	7.5	42.5	21	DIN EN ISO 228-1
110224	200.1210	10	G 1/2	17.0	10.0	43.0	24	DIN EN ISO 228-1
110225	200.1212	12	G 1/2	20.0	10.0	44.5	24	DIN EN ISO 228-1
110225 = discontinued product. No longer available. New product 151499 (200.1212-2)								



201.148

Straight non-return valve, flow direction from tube to port, parallel male thread with O-ring (NBR)

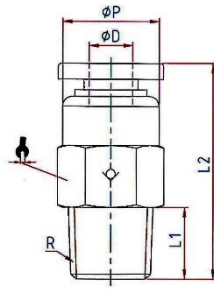
Art. No.	Type No.	Ø D mm	G mm	Ø D1 mm	L1 mm	L2 mm	a/f mm	Standard thread
110235	201.54	4	M5	10.0	3.5	31.0	10	DIN 13-1
110236	201.184	4	G 1/8	10.0	5.5	24.2	14	DIN EN ISO 228-1
110236 = discontinued product. No longer available. New product 151510 (201.184-2)								
110237	201.186	6	G 1/8	12.0	5.5	31.0	14	DIN EN ISO 228-1
110237 = discontinued product. No longer available. New product 151355 (201.186-1)								
110238	201.188	8	G 1/8	14.0	5.5	32.8	14	DIN EN ISO 228-1
110238 = discontinued product. No longer available. New product 151356 (201.188-1)								
110239	201.146	6	G 1/4	12.0	7.5	33.0	17	DIN EN ISO 228-1
110239 = discontinued product. No longer available. New product 151357 (201.146-1)								
110240	201.148	8	G 1/4	14.0	7.5	34.8	17	DIN EN ISO 228-1
110240 = discontinued product. No longer available. New product 151358 (201.148-1)								
110241	201.3810	10	G 3/8	17.0	7.5	41.0	20	DIN EN ISO 228-1
110241 = discontinued product. No longer available. New product 151515 (201.3810-2)								
110242	201.3812	12	G 3/8	20.0	7.5	42.5	21	DIN EN ISO 228-1
110243	201.1210	10	G 1/2	17.0	10.0	43.0	24	DIN EN ISO 228-1
110244	201.1212	12	G 1/2	20.0	10.0	44.5	24	DIN EN ISO 228-1
110244 = discontinued product. No longer available. New product 151518 (201.1212-2)								



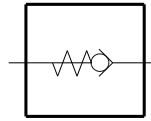
202.148

Straight non-return valve, flow direction from port to tube, conical male thread, coated

Art. No.	Type No.	Ø D mm	R mm	L1 mm	L2 mm	Ø P mm	a/f mm	Standard thread
110226	202.184	4	R 1/8	7.5	24.0	10.0	10	ISO 7-1
110226 = discontinued product. No longer available. New product 151353 (202.184-1)								
110227	202.186	6	R 1/8	7.5	31.0	12.0	12	ISO 7-1
110227 = discontinued product. No longer available. New product 151354 (202.186-1)								
110228	202.188	8	R 1/8	7.5	32.8	14.0	14	ISO 7-1
110228 = discontinued product. No longer available. New product 151502 (202.188-2)								
110229	202.146	6	R 1/4	9.5	33.0	14.0	14	ISO 7-1
110229 = discontinued product. No longer available. New product 151503 (202.146-2)								
110230	202.148	8	R 1/4	9.5	34.8	14.0	14	ISO 7-1
110230 = discontinued product. No longer available. New product 151504 (202.148-2)								
110231	202.3810	10	R 3/8	10.5	41.0	17.0	17	ISO 7-1
110232	202.3812	12	R 3/8	10.5	42.5	20.0	21	ISO 7-1
100233	202.1210	10	R 1/2	13.5	43.0	17.0	21	ISO 7-1
110234	202.1212	12	R 1/2	13.5	44.5	21.0	21	ISO 7-1

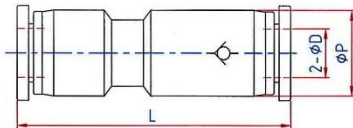


203.148

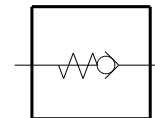


Straight non-return valve, flow direction from tube to port, conical male thread, coated

Art. No.	Type No.	Ø D mm	R mm	L1 mm	L2 mm	Ø P mm	a/f mm	Standard thread
110245	203.184	4	R 1/8	7.5	24.0	10.0	10	ISO 7-1
110245 = discontinued product. No longer available. New product 151519 (203.184-2)								
110246	203.186	6	R 1/8	7.5	26.0	12.0	12	ISO 7-1
110246 = discontinued product. No longer available. New product 151359 (203.186-1)								
110247	203.188	8	R 1/8	7.5	32.8	14.0	14	ISO 7-1
110247 = discontinued product. No longer available. New product 151521 (203.188-2)								
110248	203.146	6	R 1/4	9.5	33.0	12.0	14	ISO 7-1
110248 = discontinued product. No longer available. New product 151360 (203.146-1)								
110249	203.148	8	R 1/4	9.5	34.8	14.0	14	ISO 7-1
110249 = discontinued product. No longer available. New product 151361 (203.148-1)								
110250	203.3810	10	R 3/8	10.5	41.0	17.0	17	ISO 7-1
110251	203.3812	12	R 3/8	10.5	42.5	20.0	21	ISO 7-1
110252	203.1210	10	R 1/2	13.5	43.0	17.0	21	ISO 7-1
110253	203.1212	12	R 1/2	13.5	44.5	20.0	21	ISO 7-1



204.04



Straight non-return valve with plug connection

Art. No.	Type No.	Ø D mm	Ø P mm	L mm
110254	204.04	4	13.0	47.0
110254 = discontinued product. No longer available. New product 151362 (204.04-1)				
110255	204.06	6	13.0	46.0
110255 = discontinued product. No longer available. New product 151363 (204.06-1)				
110256	204.08	8	15.0	51.0
110256 = discontinued product. No longer available. New product 133936 (204.08)				
133936	204.08	8	14.8	53.0
133936 = discontinued product. No longer available. New product 151530 (204.08-2)				
110257	204.10	10	19.0	62.0
110257 = discontinued product. No longer available. New product 151364 (204.10-1)				
110258	204.12	12	21.5	64.0
110258 = discontinued product. No longer available. New product 151532 (204.12-2)				

* The suitability test for the use with alternative specifications is the user's responsibility.